



West Shore Sail Club Lighthouse Challenge 2021

Aug 21, 2021

Rain Date Aug 22, 2021

Organizing Authority:
West Shore Sail Club (WSSC)

Race Results will be posted at NoticeofRace.net.

Sailing Instructions

1.0 MANAGEMENT AND RULES

- 1.1 The races will be under the management of the WEST SHORE SAIL CLUB (WSSC) OFFICERS AND RACE COMMITTEE, which will have full and final authority in establishing the racing articles and in interpreting the rules.
- 1.2 The RACING RULES of SAILING (RRS), and the prescriptions of the UNITED STATES SAILING ASSOCIATION, except as modified by this program, will govern all races.

2.0 SAIL NUMBERS

- 2.1 Sail numbers must be carried on both sides of mainsail, overlapping headsails, and spinnakers, or in compliance with RRS Appendix H. FINISH TIMES MAY NOT BE TAKEN if sails are not numbered as registered.

3.0 RACE CLASSES

- 3.1 Jib and Main (JAM), Spinnaker, and Cruising Class.
- 3.2 A boat will be considered in the cruising class only if it fits the formula attached as part Addendum B in this document. Cruising class ratings will be assigned at the discretion of the Race Chairman (in line with PHRF-LE ratings) without penalty. Do this by contacting Dick Synowiec cptsnick@gmail.com 734 674-4008] early. This status must be reviewed by the race committee at least two weeks prior to the actual race and a determination made as to whether the boat and crew are primarily racers or cruisers. The number of crewmembers will not be a factor. If you are in the cruising class for WNATR you will be eligible for the cruising class in this race.
- 3.4 Each class may be subdivided based on PHRF rating numbers and the number of competitors registered. The Organizing authority will publish a scratch sheet with sub-class assignments on www.noticeofrace.net at prior to the race.

4.0 RADIO COMMUNICATION

- 4.1 VHF Channel 71 will be used for communication and courtesy broadcasts, as well as for notification of a race being cancelled due to severe weather conditions.
- 4.2 Any yacht that retires from a race shall contact the committee boat. This may be done on channel 71.

5.0 COURSES AND MARKS

- 5.1 The race course description is provided in Addendum A.
- 5.2 Race Course illustrations are provided in Addendum C.
- 5.3. Pass all marks as indicated in the race course description.
- 5.3 WSSC Race Committee may decide to shorten course utilizing one of the marks of the course. The shorten course instructions will be announced on Channel 71. It is the skipper's responsibility to monitor Channel 71 during the duration of the race.



6.0 SIGNALS

6.1 Signals shall be hoisted in accordance with RRS Rule 26.

6.2 In the event a race is abandoned, Code Flag "N" will be hoisted. Code Flag "N" is a blue and white-checked flag. This changes RRS 32.

7.0 RESTRICTED AREA

7.1 The restricted area is an oval whose imaginary boundary is Fifty (50) yards away from both sides and both ends of the start/finish line. Each yacht must KEEP CLEAR of the restricted area, and the first leg of the course until the warning signal, 5 minutes before its class starts.

7.2 After starting, a boat shall not cross the start/finish line until she finishes. The line and its ends shall be considered obstructions for the purposes of RRS 19 and 20.

8.0 STARTING SEQUENCE

8.1 The starting sequence is provided in Addendum A. Note: Start times are approximate.

9.0 START

9.1 Races will be started using RRS rule 26, with classes starting as listed on the starting sequence listed in these instructions. (Addendum A)

9.2 The starting line shall be between a staff displaying an orange flag on the Committee boat (or the mast of the committee boat if no orange flag is displayed) and the course side of N Mark.

9.3 The committee boat may utilize a protection buoy. This buoy is considered to be an extension of the Committee boat. No yacht may properly start between the protection buoy and the committee boat.

9.4 The committee boat will attempt to acknowledge any boats on the course side (OCS) of the starting line at her starting signal by the following: displaying code flag X (white with blue cross) along with a sound signal, and hailing the sail number or boat name. An attempt may also be made to hail the sail numbers of any boats OCS on VHF channel 71. Failure of a boat to observe these signals will not excuse a premature start. It is the responsibility of each yacht to make a proper start.

9.5 CONTACT WITH THE COMMITTEE BOAT MEANS AUTOMATIC DISQUALIFICATION WITHOUT APPEAL!!!
This changes RRS 31 and 21.

10.0 FINISH

10.1 The finish line shall be between a staff displaying an orange flag on the committee boat (or the RC Flag if an orange flag is not displayed), and the course side of the finishing mark. Boats shall be considered finished when any part of their boat in normal position passes across the finish line from the course side (from the direction of the last mark).

10.2 To assure the best possible accuracy in timekeeping, after dark, call out your sail number and illuminate your sail as you approach the finish line. It is the responsibility of each yacht to know the time you finish and the yachts finishing before and after you. KEEP A RECORD AND CONTACT THE RACE COMMITTEE IF YOU FIND A DISCREPANCY.

10.3 The committee boat will try to display a yellow anti-collision strobe light or other identifying light and its anchor light after dark.



11.0 AWARDS AND RESULTS

- 11.1 Awards will be given in each class. Awards are presented during the WSSC Regatta Party,
- 11.2 Dinner and Awards to follow at the Grosse Ile Township Pavilion (next to Smokies on the Water)
25555 W. River Road, Grosse Ile Township, MI. West River Road between GI Parkway and Bellvue
- 11.3 Results will be announced approximately one and a half hours after the last boat to finish. If this is past 10:00 pm then the results will be presented for the classes that have finished.
- 11.4 Official results will be posted on noticeofrace.net ASAP.

12.0 PROTESTS

- 12.1 Yachts protesting must follow Part 5, Section A of RRS, except there shall be no charge for filing a protest.
- 12.2 A boat wishing to protest must inform the committee boat of their intention to protest, either by hail or VHF, after finishing, and must file the protest with a member of the WSSC RACE COMMITTEE within two (2) hours of finish (or retiring).
- 12.3 Protest shall be written on a US Sailing Protest, Regress and Reopening form listed at the end of Appendix T of RRS.
- 12.4 The protest committee may use pre-hearings whenever possible to expedite the protest processes. If involved in a protest, you will be notified of the pre-hearing procedure.
- 12.5 Protests will be held as soon as possible after all parties and witnesses can be represented.
- 12.6 The Two-Turns Penalty is replaced by the One-Turn Penalty. This changes RRS 44.1.

13.0 HOMELAND SECURITY

- 13.1 Racers should be aware that numerous restrictions on maneuvering and navigation may be in place on International waters constituting and adjacent to the racing area- mainly in the Detroit River Shipping channel. Failure to honor these and subsequent delays to racing due to that are NOT grounds for redress.
- 13.2 Racing boats shall not be entitled to redress due to stoppage or other material interference by law enforcement authorities.
- 13.3 WSSC has received permission to place a buoy in Canadian waters and racers are allowed to enter Canadian waters and leave without the normal requirements to register with the authorities.

The following is an excerpt from the communications I received from the Canada Border Services Agency:

As of August 9th, I've confirmed that entry into Canadian waters for leisure cruising (known as loop movement) is permitted to any foreign boater provided they meet the following criteria:

- **Vaccinated or not;**
- **Travelers continuously remain on board the conveyance while in Canadian waters;**
- **Do not land in Canada;**
- **The conveyance does not make contact with another conveyance, moor or anchor while in Canadian waters.**

These boaters may engage in touring, sightseeing or pleasure fishing, in Canadian waters as long as they meet the above conditions.



2021 LIGHTHOUSE CHALLENGE STARTING SEQUENCE

(Note: This starting sequence is in compliance with the 2021 - 2024 Race Rules of Sailing)

Note: Start times are approximate

Time	Sound Signal	Visual Signal	Meaning
11:15	Short	Blue flag UP	Spinnaker A Warning
11:16	Short	P Flag (blue/white square) UP	Spinnaker A Prep
11:19	Long	P Flag DOWN	Spinnaker A 1 minute
11:20	Short	Blue Flag DOWN / Purple Flag UP	Spinnaker A Start / Spinnaker B Warning
11:21	Short	P Flag (blue/white square) UP	Spinnaker B Prep
11:24	Long	P Flag DOWN	Spinnaker B 1 minute
11:25	Short	Purple Flag DOWN / Green Flag UP	Spinnaker B Start / JAM Warning
11:26	Short	P Flag (blue/white square) UP	JAM Prep
11:29	Long	P Flag DOWN	JAM 1 minute
11:30	Short	Green Flag DOWN / White Flag UP	JAM Start / Cruiser Warning
11:31	Short	P Flag (blue/white square) UP	Cruiser Prep
11:34	Long	P Flag DOWN	Cruiser 1 minute
11:35	Short	White Flag DOWN	Cruiser Start

2021 LIGHTHOUSE CHALLENGE RACE COURSES

There are 4 unique courses described below. They are designated:

Course "A" = 11.65 nm

Course "B" = 10.22 nm

Course "C" = 7.05 nm

Course "D" = 5.68 nm

All courses start and finish at the 2021 WNATR American course buoy "S".

The committee boat will select a group of courses for the race depending on the prevailing wind and weather at the time of the start. The committee boat will display either a:

- numeral "1" flag for course group 1 (long course/normal wind)
- numeral "2" flag for course group 2 (short course/light wind).

The course sets are as follows:

Group "1"

CLASS	COURSE
Spinnaker A	A
Spinnaker B	A
JAM	B
Cruiser	C

Group "2"

CLASS	COURSE
Spinnaker A	B
Spinnaker B	B
JAM	C
Cruiser	D



2021 LIGHTHOUSE CHALLENGE RACE COURSES - continued

COURSE "A"			
Mark	Approximate	Leave to	nm
WSSC WNATR S buoy	N 042.01.282 W 083.09.182	Start	0
East Outer Channel Lighted Buoy 13 (Green)	N 041.59.415 W 083.08.173	Starboard	2.01
West Outer Channel Buoy 4 (Red Nun)	N 041.57.775 W 083.09.147	Port	1.79
East Outer Channel LIGHT 10 (Cyl Tower)	N 041.57.800 W 083.07.283	Port	1.39
WSSC LHC added Buoy "CA C" (old Canadian WNATR C Bouy)	N 042.01.385 W 083.06.622	Port	3.62
Detroit Light	N 042.00.294 W 083.08.284	Starboard	1.65
WSSC WNATR S buoy	N 042.01.282 W 083.09.182	Finish	1.19
			11.65

COURSE "B"			
Mark	Approximate	Leave to	nm
WSSC WNATR S buoy	N 042.01.282 W 083.09.182	Start	0
East Outer Channel Lighted Buoy 13 (Green)	N 041.59.415 W 083.08.173	Starboard	2.01
East Outer Channel Light 10 (Cyl Tower)	N 041.57.800 W 083.07.283	Port	1.75
WSSC LHC added Buoy "CA C" (old Canadian WNATR C Bouy)	N 042.01.385 W 083.06.622	Port	3.62
Detroit Light	N 042.00.294 W 083.08.284	Starboard	1.65
WSSC WNATR S buoy	N 042.01.282 W 083.09.182	Finish	1.19
			10.22

Continues on Next Page

2021 LIGHTHOUSE CHALLENGE RACE COURSES - continued

COURSE "C"			
Mark	Approximate	Leave to	nm
WSSC WNATR S buoy	N 042.01.282 W 083.09.182	Start	0
East Outer Channel Lighted Buoy 14 (Red)	N 041.59.457 W 083.07.944	Port	2.04
WSSC LHC added Buoy "CA C" (old Canadian WNATR C Bouy)	N 042.01.385 W 083.06.622	Port	2.16
Detroit Light	N 042.00.294 W 083.08.284	Starboard	1.65
WSSC WNATR S buoy	N 042.01.282 W 083.09.182	Finish	1.19
			7.05

COURSE "D"			
Mark	Approximate	Leave to	nm
WSSC WNATR S buoy	N 042.01.282 W 083.09.182	Start	0
Detroit Light	N 042.00.294 W 083.08.284	Port	1.19
WSSC LHC added Buoy "CA C" (old Canadian WNATR C Bouy)	N 042.01.385 W 083.06.622	Port	1.65
Detroit Light	N 042.00.294 W 083.08.284	Starboard	1.65
WSSC WNATR S buoy	N 042.01.282 W 083.09.182	Finish	1.19
			5.68

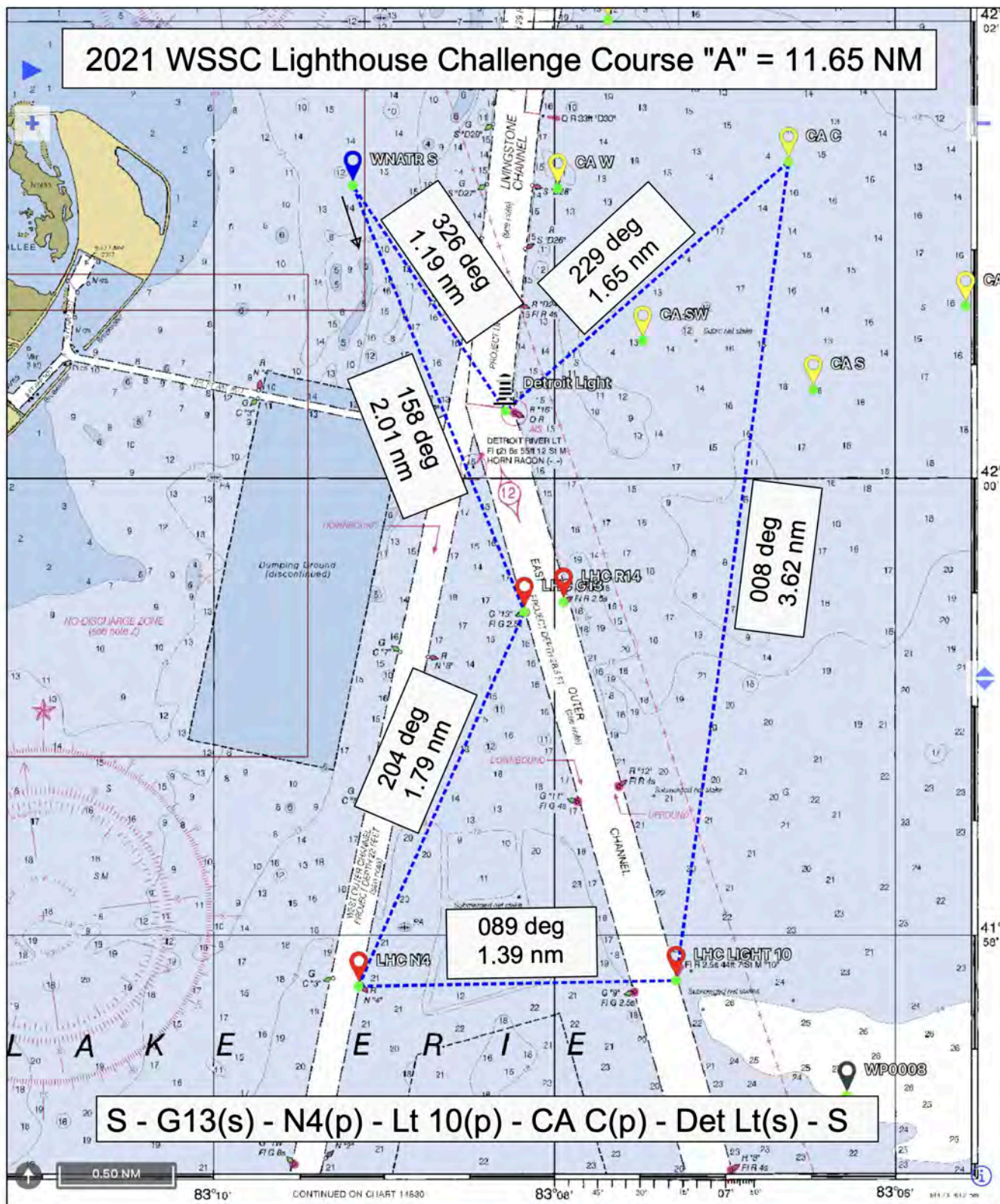


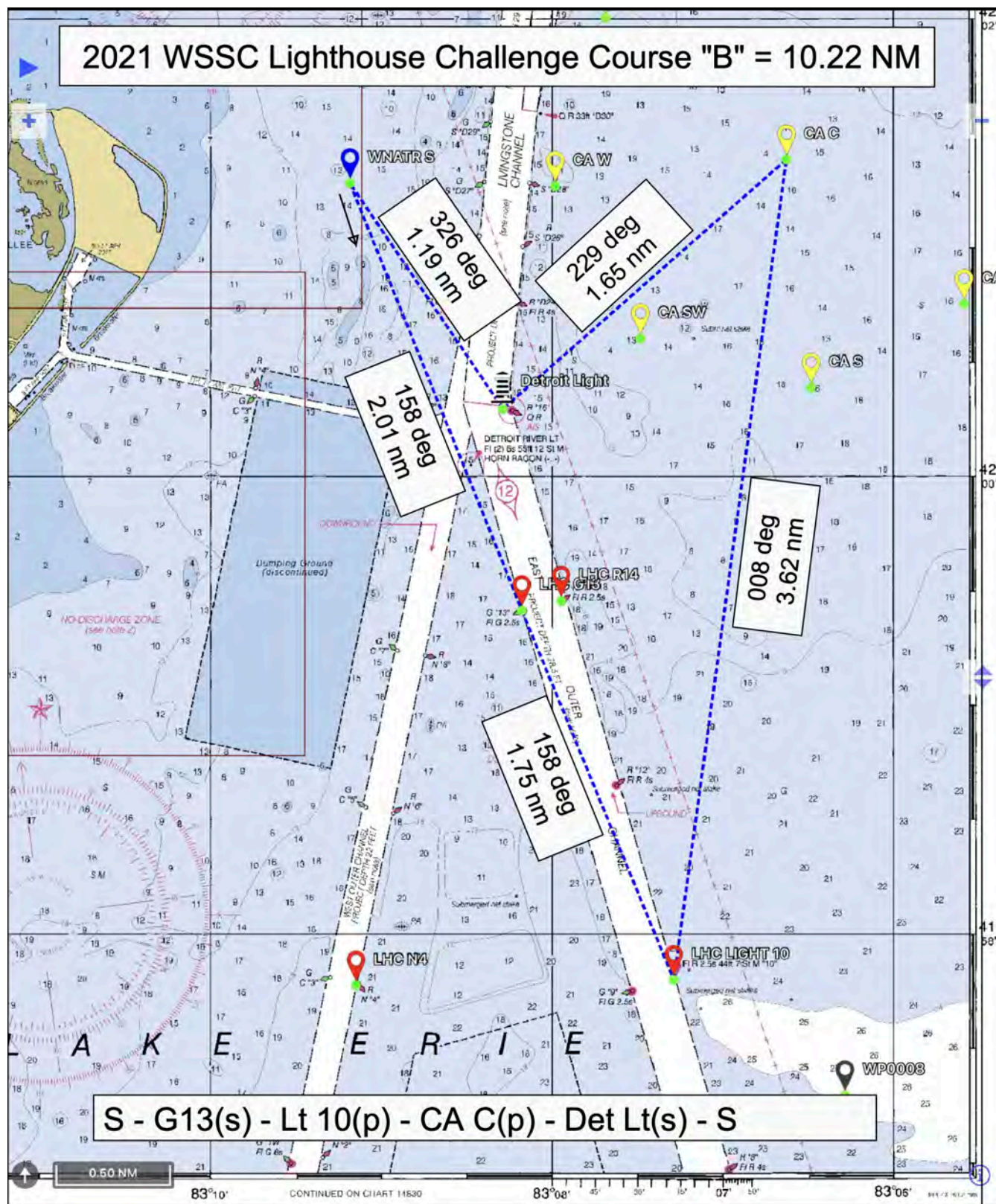
WSSC CRUISING CLASS FORMULA

The key principle is that the boat's primary purpose must be cruising rather than racing. This is a subjective call by the race committee in their evaluation. If the boat and its primary crew do not race except for long distance races, that does not make it a cruiser—just a long distance racer. Subject to the race committee's decision the following applies.

1. Boats must be true “cruising” boats meaning that they must have useable bunks, a fixed head (or porta potty), a permanently mounted stove and at least [5] of the following:
 - a. Boat more than [15] years old.
 - b. Only Dacron sails.
 - c. No sail newer than [5] years.
 - d. Carries no spinnaker pole or whisker pole.
 - e. Fixed propeller (can be outboard motor with prop in water.)
 - f. Will carry [4] gallons of water per crewmember in a fixed tank.
 - g. Will have fuel to travel [50] miles under engine alone.
 - h. Will have a properly sized anchor and rode mounted on or stored on the bow.
 - i. Windlass.
 - j. A Skeg.
 - k. Radar
 - l. Bow thruster
 - m. Shrouds within [5] inches of the rail.
 - n. Generator, wind generator or solar panel(s).
2. Membership in PHRF-LE and an official PHRF rating are encouraged, however non-members will have a provisional rating assigned without the penalty normally associated with provisional ratings.
3. Sails.
 - a. No spinnakers, cruising chutes or bloopers are allowed.
 - b. Only Dacron, Pentax, polyester, or Mylar fabric may be used in sails.
 - c. Staysails are permitted only if rated as part of a cutter rig.
 - d. Boats rated with roller furling must use a sail, which can be furled while racing and cannot change headsails during a race.



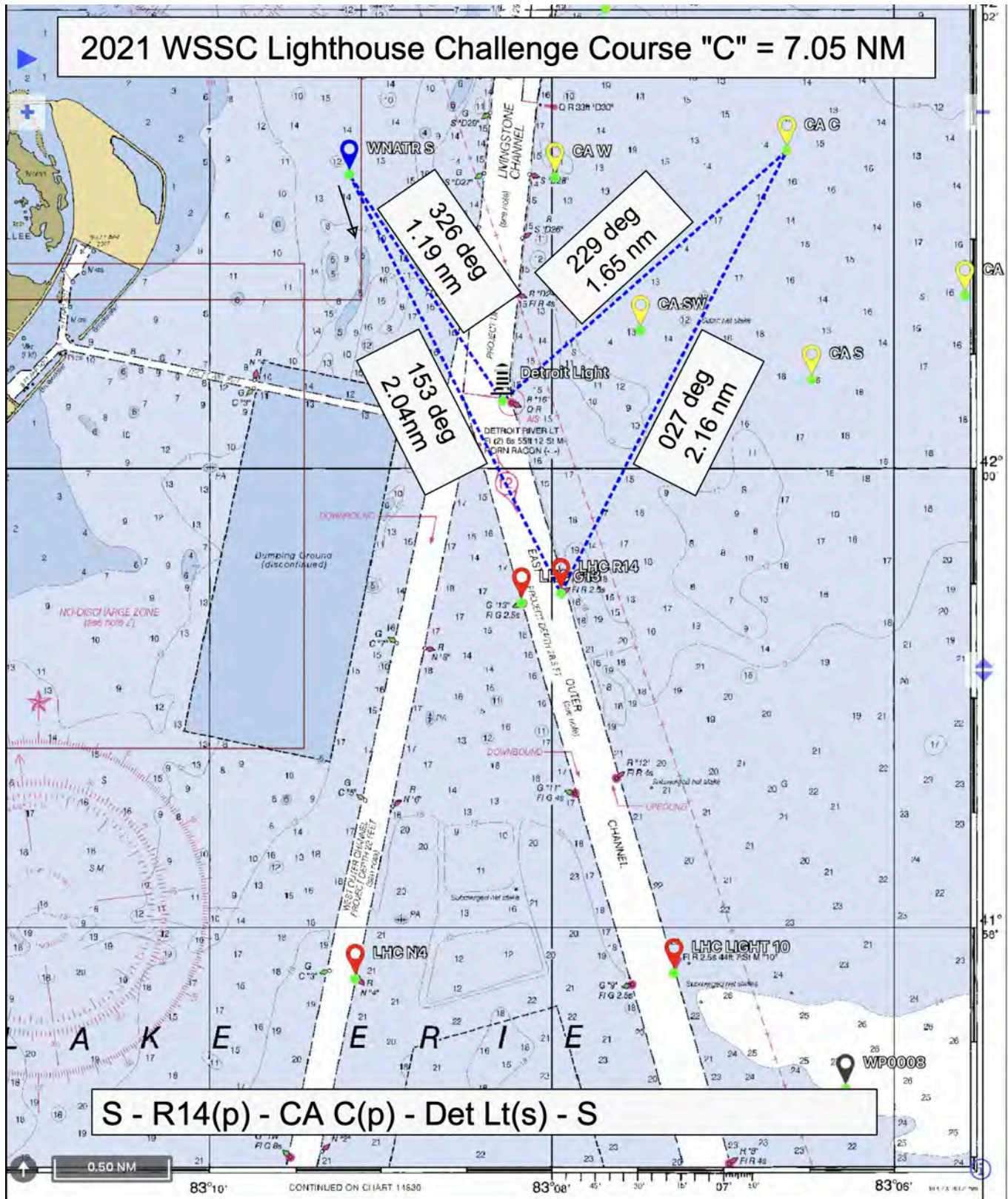
2021 LIGHTHOUSE CHALLENGE RACE COURSE ILLUSTRATIONS

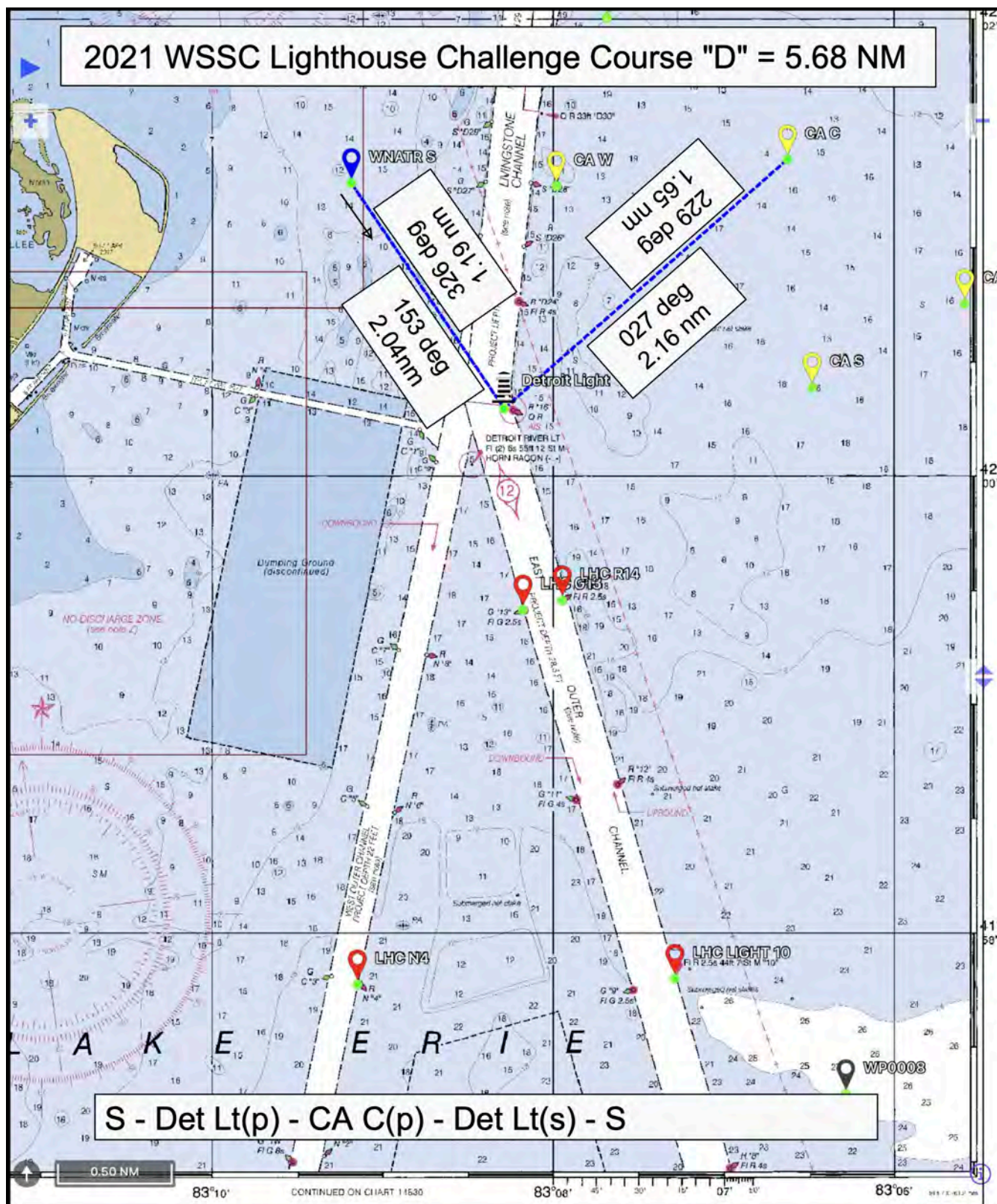
2021 LIGHTHOUSE CHALLENGE RACE COURSE ILLUSTRATIONS (cont.)

Course B



2021 LIGHTHOUSE CHALLENGE RACE COURSE ILLUSTRATIONS (cont.)



2021 LIGHTHOUSE CHALLENGE RACE COURSE ILLUSTRATIONS (cont.)

Course D

End of Instructions